

# Jolt Bar FX



Light Efficiency:

74 Lumen/Watt

Light Quality:

CRI: 74.0

Color Temperature:

6961 K

Output: 15251 lm

Peak: 8344 cd

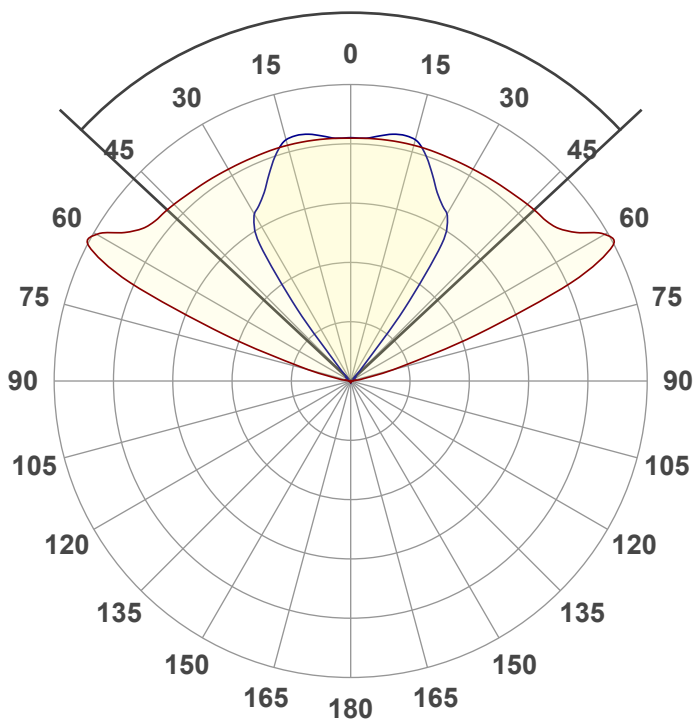
Power: 207 W

PF: 0.98



Beam Angle

94°



Test:

White

Date:

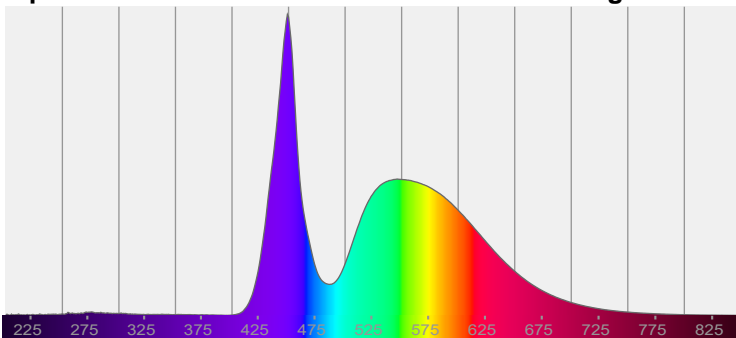
10/4/2022

Note:

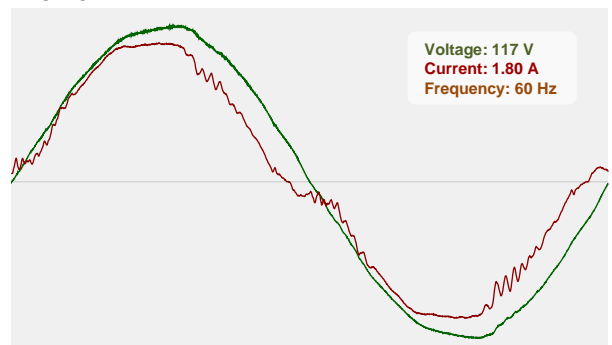
CIE 1931  
x: 0.307  
y: 0.316

Spectra

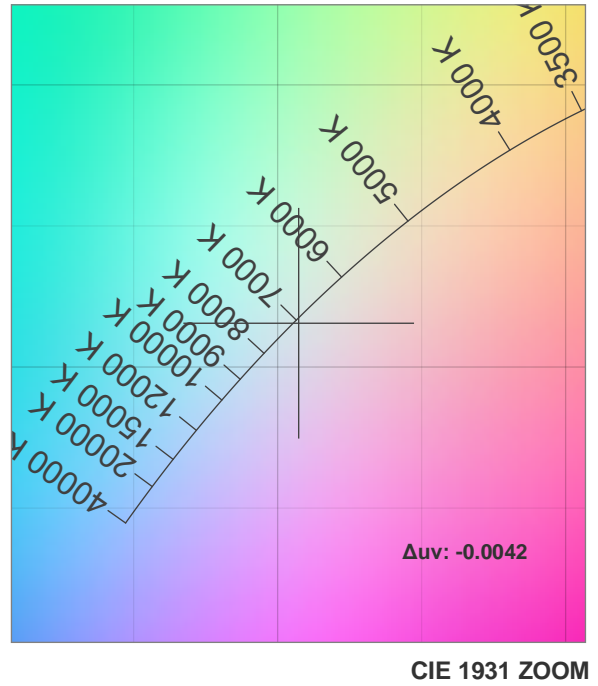
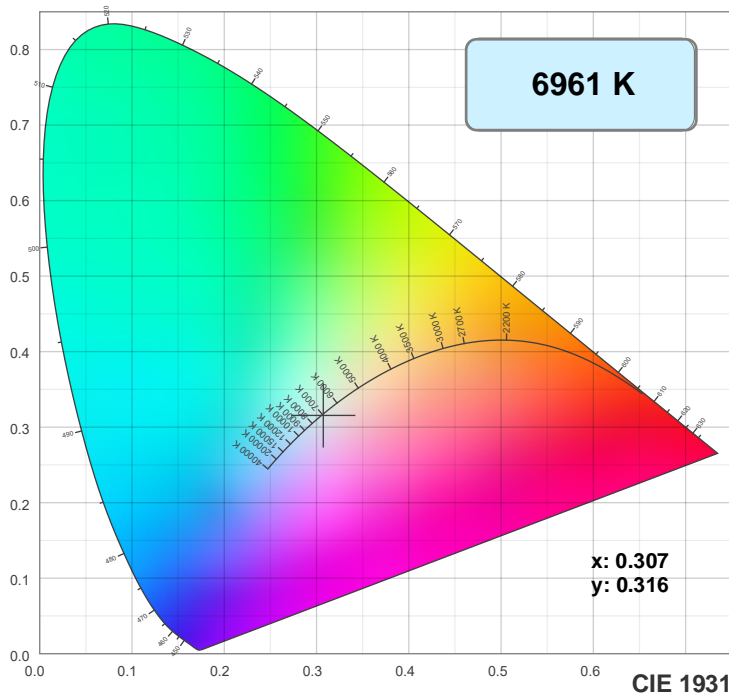
Dominant Wavelength: 360nm



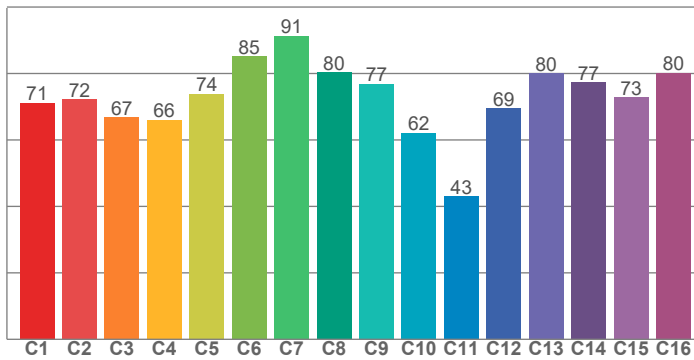
Power



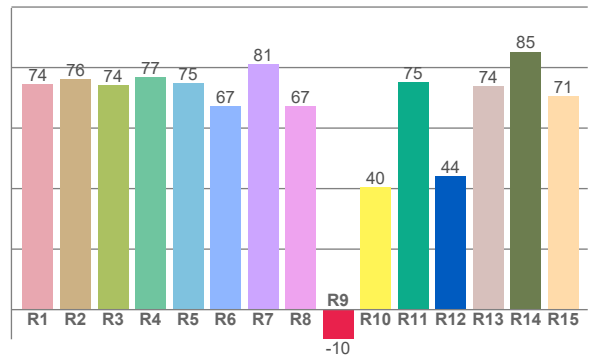
## Color Details



TM30: 72.8



CRI: 74.0 (R1-R8)



CRI R values, only R1-R8 are used to calculate final CRI value

R1	R2	R3	R4	R5	R6	R7	R8	R9	R10	R11	R12	R13	R14	R15
74.4	76.2	74.2	76.7	74.8	67.1	81.0	67.2	-9.8	40.5	75.2	44.2	73.8	85.2	70.6

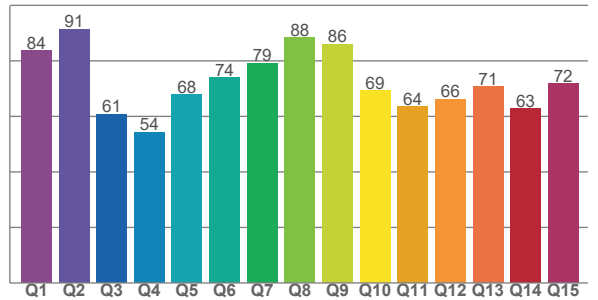
TM30 C values, 16 binned values out of total of 99 C values

C1	C2	C3	C4	C5	C6	C7	C8	C9	C10	C11	C12	C13	C14	C15	C16
71.2	72.2	66.7	66.0	73.9	85.1	91.3	80.4	76.8	62.1	43.0	69.4	80.1	77.2	72.9	80.2

CQS Q values

Q1	Q2	Q3	Q4	Q5	Q6	Q7	Q8	Q9	Q10	Q11	Q12	Q13	Q14	Q15
83.6	91.4	60.8	54.3	67.8	74.0	79.2	88.4	86.0	69.3	63.6	66.3	70.8	62.8	71.9

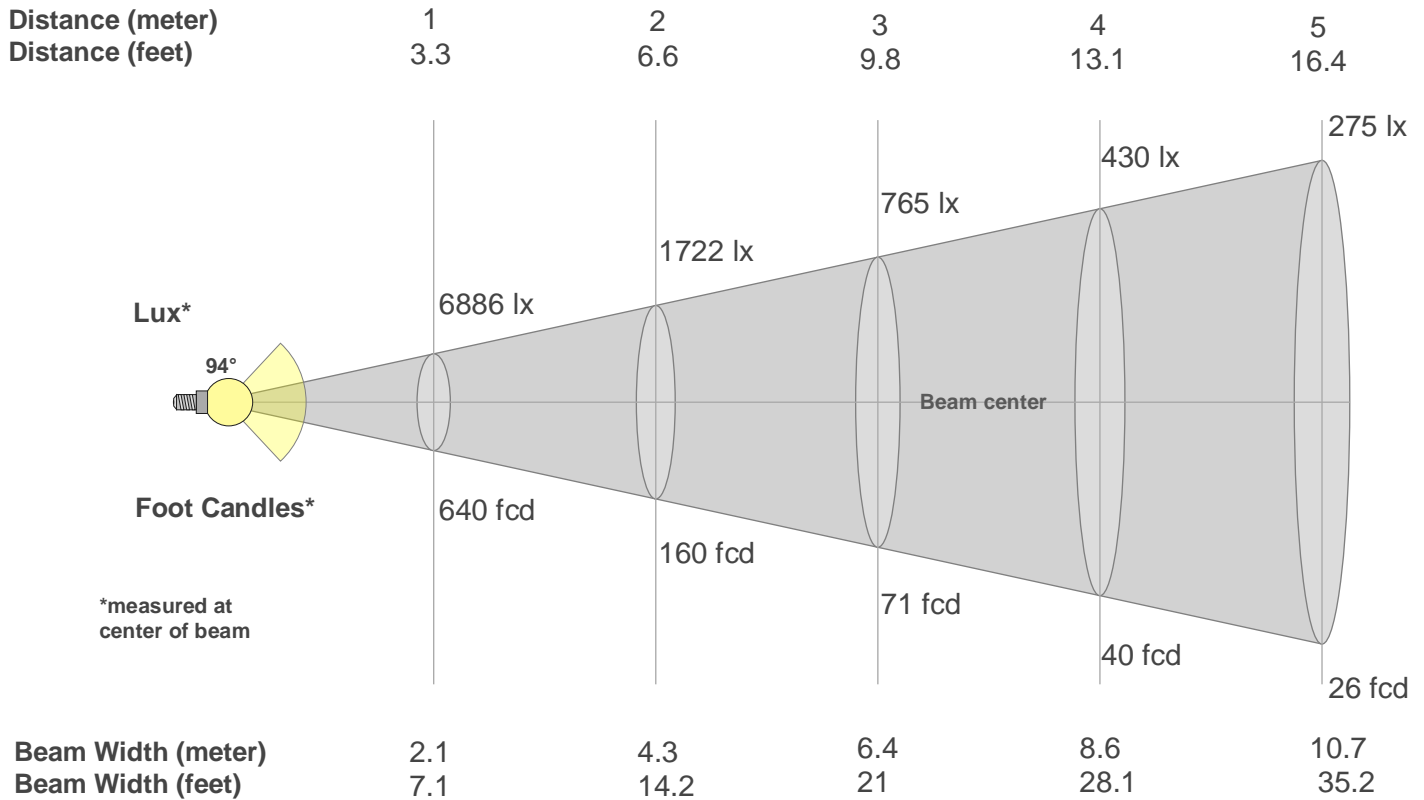
CQS: 70.7



## Color Parameters

Color Temperature	Color Rendering Index	Red Component	Color Fidelity	Color Gamut	Color Quality Scale	Color Coordinate CIE 1931	Color Coordinate CIE 1931	Color Coordinate	Color Coordinate	Color Deviation from Black Body
CCT	CRI	CRI R9	TM30 Rf	TM30 Rg	CQS	x	y	u	v	$\Delta uv$
6961 K	74.0	-9.8	72.8	95.7	70.7	0.307	0.316	0.199	0.307	-0.0042

## Beam Details



Beam Intensities from 1-20m

m	1	2	3	4	5	6	7	8	9	10	11	12	13	14	15	16	17	18	19	20
ft	3.3	6.6	9.8	13.1	16.4	19.7	23	26.2	29.5	32.8	36.1	39.4	42.7	45.9	49.2	52.5	55.8	59.1	62.3	65.6
lx	6886	1722	765	430	275	191	141	108	85	69	57	48	41	35	31	27	24	21	19	17
fcd	639.8	159.9	71.1	40	25.6	17.8	13.1	10	7.9	6.4	5.3	4.4	3.8	3.3	2.8	2.5	2.2	2	1.8	1.6

Intensities in 0° C-plane

0°	5°	10°	15°	20°	25°	30°	35°	40°	45°	50°	55°	60°	65°	70°	75°	80°	85°	90°	95°
6886	6889	6902	6910	6910	6910	6926	6960	7005	7075	7147	7456	8276	7283	3711	1293	345	67	4	1
100%	100%	100%	100%	100%	100%	101%	101%	102%	103%	104%	108%	120%	106%	54%	19%	5%	1%	0%	0%

Intensities in 90° C-plane

0°	5°	10°	15°	20°	25°	30°	35°	40°	45°	50°	55°	60°	65°	70°	75°	80°	85°	90°	95°
6886	6933	7092	7054	6514	5841	5423	3688	576	168	184	157	107	80	53	26	7	0	0	0
100%	101%	103%	102%	95%	85%	79%	54%	8%	2%	3%	2%	2%	1%	1%	0%	0%	0%	0%	0%

Intensities in 180° C-plane

0°	5°	10°	15°	20°	25°	30°	35°	40°	45°	50°	55°	60°	65°	70°	75°	80°	85°	90°	95°
6886	6889	6902	6910	6910	6910	6926	6960	7005	7075	7147	7456	8276	7283	3711	1293	345	67	4	1
100%	100%	100%	100%	100%	100%	101%	101%	102%	103%	104%	108%	120%	106%	54%	19%	5%	1%	0%	0%

Intensities in 270° C-plane

0°	5°	10°	15°	20°	25°	30°	35°	40°	45°	50°	55°	60°	65°	70°	75°	80°	85°	90°	95°
6886	6933	7092	7054	6514	5841	5423	3688	576	168	184	157	107	80	53	26	7	0	0	0
100%	101%	103%	102%	95%	85%	79%	54%	8%	2%	3%	2%	2%	1%	1%	0%	0%	0%	0%	0%

Beam Angle 50%	Field Angle 10%	Cutoff Angle 2,5%	Intensity Ratio in 120° Cone	Intensity Ratio in 90° Cone
94°	104.8°	131.1°	84.7%	67.3%